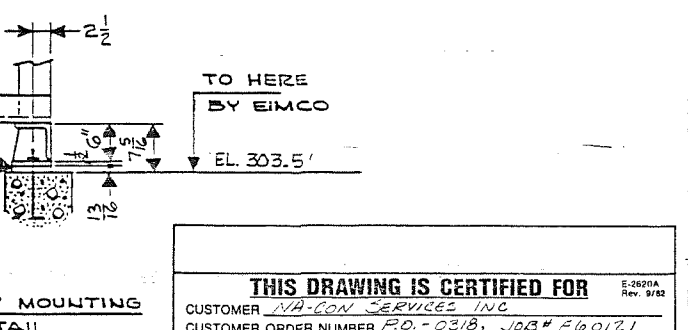
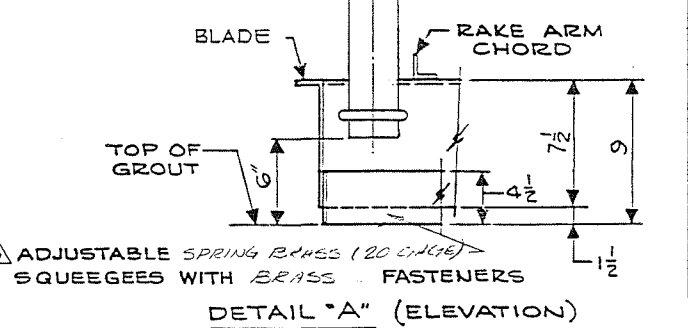
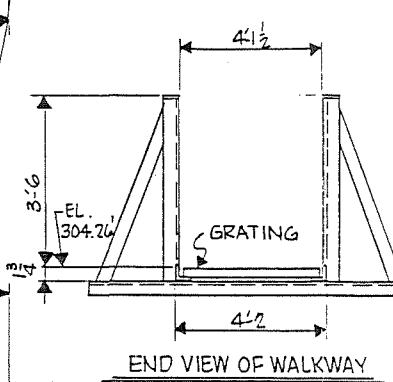


- NOTES:
1. ASTERISK (*) DENOTES VARIANCE FROM CONTRACT DOCUMENTS AND SHOULD BE PARTICULARLY NOTED
 2. THE FOLLOWING DEFINES THE RESPONSIBILITY OF THE EIMCO PROCESS EQUIPMENT COMPANY (EIMCO) WITH REGARD TO THE INFORMATION AND DIMENSIONS SHOWN ON THIS DRAWING. (A) DIMENSIONS, LOADS, AND OTHER INFORMATION ARE PROVIDED TO ACCOMMODATE THE EQUIPMENT TO THE STRUCTURE AS SHOWN. (B) THE CUSTOMER IS TO PROVIDE REINFORCING STEEL AND DESIGN FOR CONCRETE STRUCTURES AND IS TO DETERMINE SIZES TO SUIT LOCAL CONDITIONS. (C) THIS DRAWING IS NOT TO BE USED FOR CONSTRUCTION OR INSTALLATION PURPOSES UNLESS IT BEARS THE APPROVAL OF THE OWNER, THE ENGINEER OR THEIR AUTHORIZED REPRESENTATIVE. (D) THE MECHANISM SHOWN IS DESIGNED FOR DIRECTION OF ROTATION AS INDICATED. EIMCO DOES NOT ASSUME RESPONSIBILITY FOR DAMAGE IF OPERATED IN THE OPPOSITE DIRECTION. (E) CHARGES FOR MODIFICATIONS, ADDITIONS OR CORRECTIONS TO THE EQUIPMENT WILL NOT BE ACCEPTED BY EIMCO UNLESS PRIOR APPROVAL IS OBTAINED IN WRITING FROM AN AUTHORIZED EIMCO REPRESENTATIVE.
 3. EIMCO DOES NOT FURNISH ELECTRICAL WIRING, CONDUIT OR ELECTRICAL EQUIPMENT, PIPING, VALVES OR FITTINGS; LUBRICATING OIL OR GREASE; FIELD PAINTING; FIELD WELDING OR ERECTION, EXCEPT AS SPECIFICALLY NOTED.
 4. SHOP PRIMER PAINT IS INTENDED TO SERVE ONLY AS A PROTECTIVE OR SEALING COAT. AS SUCH IT AFFORDS THE METAL ONLY MINIMAL PROTECTION AGAINST THE ELEMENTS. EIMCO CANNOT BE RESPONSIBLE FOR DETERIORATION OF SHOP-PRIMED EQUIPMENT DURING TRANSIT, JOB STORAGE OR OTHER EXPOSURE TO THE ELEMENTS PRIOR TO APPLICATION OF FINISH COATS.
 5. SURFACE PREPARATION TO CONSIST OF: DRIVE UNIT - SSPC-SP3 SUBMERGED & NON SUBMERGED - HOT DIP GALVANIZED
 6. SHOP PAINTING TO CONSIST OF: DRIVE UNIT (1) SHOP COAT, 1.5 MIL DRY FILM THICKNESS OF TMEC #77. SUBMERGED & NONSUBMERGED STEEL - HOT DIP GALV.
 7. FOR ADDITIONAL DETAILS, REFER TO DRAWINGS: TANK BOTTOM AND COLUMN DETAIL - 23186C2 SCUM BOX AND WEIR AND BAFFLE DETAIL - 23186C3 DRIVE CONTROL - 23186C4 SCUM BOX FLUSHING SYSTEM - 23186C5 COLUMN AND SLUDGE COLLECTION BOX - 23186C6 TORQUE TEST SCHEMATIC - 23186C7 STANDARD WIRING DIAGRAM - 203556

8. EIMCO TO SUPPLY (2) MECHANISMS AS SHOWN AND NOTED WITH ALL PLATES AND STRUCTURAL MEMBERS HAVING A MINIMUM STEEL THICKNESS OF 0.25 INCHES.
9. ALL WELDING SHALL BE PERFORMED IN ACCORDANCE WITH THE LATEST EDITION OF A.W.S. WELDING PROCEDURES WITH QUALIFICATION RECORDS PER A.W.S. D1.1. ALL WELDS TO BE CONTINUOUS SEAL WELDING, NO FIELD WELDING.
10. ALL STRUCTURAL SHAPES AND PLATES TO BE UNITED STATES DOMESTIC STEEL. MILL CERTIFICATION ON ALL MATERIALS IS REQ'D.
11. HIGH TORQUE ALARM UNIT AND MOTOR STARTERS (NOT BY EIMCO), HIGH TORQUE ALARM CONTACTS (BY EIMCO), SEE DRWG NO. 23186C4.
12. ISOLATION MUST BE PROVIDED FOR ALL ALUMINUM TO STEEL CONTACT SURFACES (ISOLATION NOT BY EIMCO).
13. ANCHOR BOLTS - HOT DIP GALVANIZED STEEL (BY EIMCO), ASSEMBLY BOLTS - HOT DIP GALVANIZED STEEL EXCEPT AS NOTED (BY EIMCO).

14. CLARIFIER IS DESIGNED TO HANDLE THE FOLLOWING FLOW PARAMETERS:
 CLARIFIER EFFLUENT - 12.5 MG/D
 MIXED LIQUOR FLOW - 18.4 MG/D
 RETURN SLUDGE - 6.174 MG/D



THIS DRAWING IS CERTIFIED FOR

CUSTOMER: *VA-CON SERVICES INC*
 CUSTOMER ORDER NUMBER: *PO-0318, JOB# E60121*
 EIMCO ORDER NUMBER: *23186-01*
 PROJECT: *ROCKY CREEK WPCP*
 PROJECT LOCATION: *Macon, Georgia*
 CONSULTING ENGINEER: *Jordan, Jones & Goulet, Inc.*
 BY: *Jay Hill* DATE: *4-17-94*

EIMCO PROCESS EQUIPMENT COMPANY

EIMCO PROCESS EQUIPMENT COMPANY - Salt Lake City, Utah
 THIS DRAWING AND ALL INFORMATION THEREON IS THE PROPERTY OF EIMCO PEC AND IS CONFIDENTIAL AND MUST NOT BE MADE PUBLIC OR COPIED. THIS DRAWING IS LOANED SUBJECT TO RETURN UPON DEMAND AND IS NOT TO BE USED DIRECTLY OR INDIRECTLY IN ANY WAY DETRIMENTAL TO OUR INTERESTS.

REVISION	BY	CHECKED	DATE	APPR.
ROTATED DRIVE	JS	HCA	1-9-87	
ADDED NOTES PER CUSTOMER REQUEST	JS	RCA	11-2-86	
REVISED PER CUSTOMER REQUEST	JS	JS	8-4-86	

DO NOT SCALE PRINTS	DATE	4-17-86
DRAWN	JS	
CHECKED	RLA	
APPR.	RLA	

FINAL CLARIFIER
 TYP. C35
 130'-0" DIA. X 14'-0" S.W.D.
 GENERAL ARRANGEMENT

DWG. NO. 2318601